

# Gaterman Crop Lifters Harvesting Attachments

DIVISION OF GATERMAN MFG. CO., INC.

## INST-8BF INSTRUCTIONS

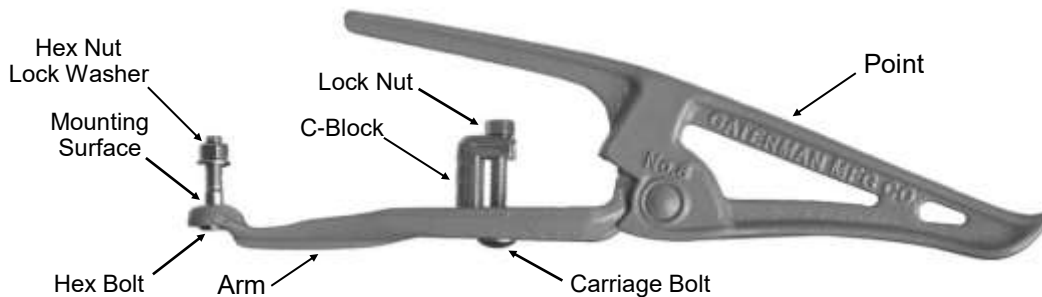
### In the Kit:

#### Part Number

CBK-8BF  
HB838214  
HN838  
LW838  
IS-INST-8BF

#### Description

C-Block - 8B Modified  
Hex Bolt - 3/8-16, 2 1/4" Long, Grade 8  
Hex Nut - 3/8-16, Grade 8  
Lock Washer - 3/8, Grade 8  
Instruction Sheet - INST-8BF



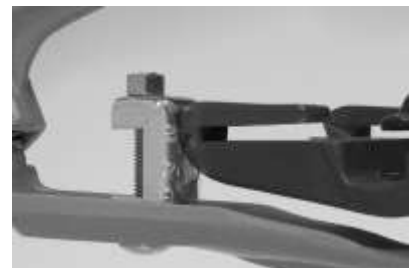
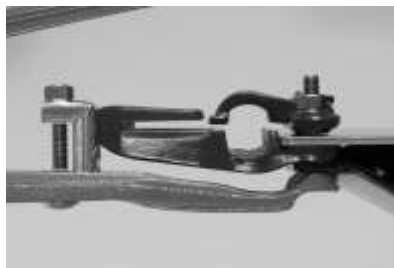
### **Overview**

The 8B is our most versatile and universal fit crop lifter. When equipped with the optional installation kit, INST-8BF, the 8B crop lifter can be used on the popular John Deere Series 600F flex head and 600FD flex head draper platforms. The 8B crop lifter is mounted on the left prong of the long-short-long stub nose sickle guards (shown on the right).



The INST-8BF provides a fixed height adjustment and solid mounting of the crop lifter. The crop lifter arm is bolted to the underside of the skid plate as shown below.

### **C-Block Mounting Pictures**



### **Safety Precautions**

1. Take all reasonable safety precautions when installing the crop lifters. This includes, but is not limited to, placing controls in neutral, stopping the engine, setting the parking brake, and switching off the ignition key. In addition, support the cutterbar head with blocks or safety stands when working beneath it.
2. When installing the sickle guard in the receiver of the C-block, make sure the tip of the sickle guard fully engages the C-block for solid mounting.
3. Be sure to use the supplied lock washer on the hex mounting bolt. The C-block uses the existing lock nut.
4. Torque the C-block carriage bolt/lock nut to 10-12 ft. lbs. and the hex mounting bolt/nut to 33 ft. lbs.

**Gaterman Mfg. Co., Inc.**  
836 South 15th Street  
Manitowoc, WI 54220  
[www.gaterman.com](http://www.gaterman.com)

Phone: (920) 682-6108  
Fax: (920) 682-6109  
Email: [joel@gaterman.com](mailto:joel@gaterman.com)

## Mounting Procedure

1. Loosely mount C-block on crop lifter arm using existing carriage bolt and lock nut, with hole #5 at the top.
2. Ensure there are no obstructions under/behind sickle guard which may interfere with crop lifter mounting.
3. Remove bolt from sickle guard where crop lifter is to be mounted.
4. With supplied hex bolt inserted in crop lifter arm, loosely bolt arm to underside of skid plate.
5. Engage C-block (# 5 upward) with sickle guard point and snug up both bolts.
6. Loosen C-block carriage bolt and slide C-block firmly onto sickle guard tip and partially tighten C-block carriage bolt. Partially tighten hex mounting bolt.
7. Alternately tighten C-block carriage bolt and hex mounting bolt. With each tightening, insure firm mounting by flexing the arm to check for clearance. If clearance is noted, repeat procedure until firmly mounted.
8. Torque the C-block carriage bolt/lock nut to 10-12 ft. lbs. and the hex mounting bolt/nut to 33 ft. lbs.



**8B Mounted on John Deere 600FD Guard and Skid Plate**

### **Crop Lifter Operating Height**

After firmly attaching the crop lifters, lower the cutterbar until the bottom of the front tip of the crop lifter just contacts the ground on a level area. Continue to lower the cutterbar until the top of the crop lifter tip is about 1/4" above the ground. This is the proper height setting for fields with level ground. Any less may result in the tip digging into the ground.



IT IS STRONGLY RECOMMENDED THAT THE SOLID MOUNTING OF THE CROP LIFTER BE VERIFIED DURING THE HARVESTING PROCESS AND RE-ADJUSTED AS NECESSARY.